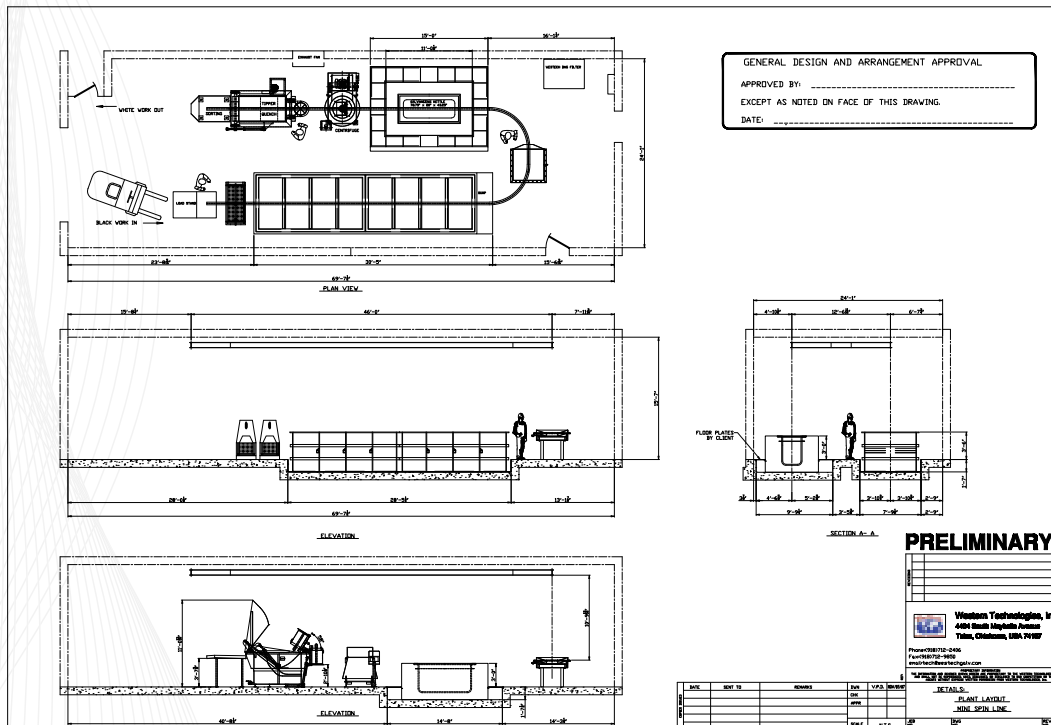


WESTECH PACKAGED MINI-GALVANIZING LINE



Features:

- Low Initial Investment
- Kettle Size: 2,0 long x 0,7 wide x 1,1m deep
- All Electric, just plug and play
- Modular construction
- Includes all equipment necessary for low-volume galvanizing operation
- Produces 1.0 ton per hour gross
- Ships in standard 40' containers

Includes:

- Galvanizing Kettle: 2,0 x 0,7 x 1,1 deep
- Electric furnace with controls
- Insulated Kettle Cover
- Electric Drying Plate
- Electric Tank Heaters
- Pretreatment Tanks—8 compartments
- (4) Manual Chain Hoists
- 20,0m monorail beam
- Portable Centrifuge with manual lid
- Bucket Tipper/Quench
- (5) Polypro Pickle Boxes
- (8) Perforated Steel Spin Buckets
- Drossing Scoop
- Drawing for sorting table
- Drawing for Centrifuge Buckets